

LCARS 03-4900

00-23892

05-30902

03-29093

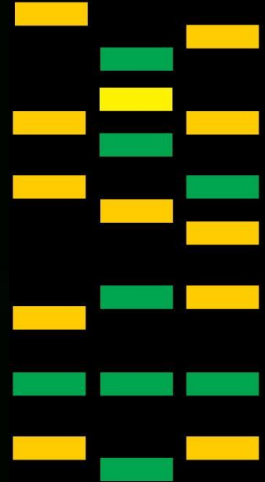
09-38989

07-38948

03-29093

09-38989

07-38948



## Starfleet Miranda-class

Frigate; Commissioned: 2243

### Hull Data

Structure: 35 [65 space][5 space remains]

Size/Decks: 5/8

Length/Height/Beam: 230/51/127.1 m

Complement: 220

### Tactical Data

Phasers: Type III (x3/B) [-6]

Penetration: 3/3/2/0/0

Torpedo Launchers: Mk 12 IF (x2/B) [-4]

Photon Penetration: 3/3/3/3/3

Deflector Shield: PFF 2 (A) [-5]

Protection/Threshold: 13/2

### Propulsion Data

Impulse System: SBE (.5c) (D) [-5]

Warp System: PB-16 (5/6/7 OCU) (C) [-6]

### Operational Data

Atmosphere Capable: No [0]

Cargo Units: 50 [0]

Life Support: Class 3 (D) [-5]

Operations System: Class 3 (D) [-5]

Sensor System: Class 3 (+3/+2/+1/0/0/D) [-3]

Separation System: No [0]

Shuttlebay: 2 a [-4]

Shuttlecraft: 10 size worth

Tractor Beams: 1 a, 1 fv [-1]

Transporters: 4 standard, 2 emergency, 4 cargo [-4]

### Miscellaneous Data

Maneuver Modifiers: +1C, +1H, +2T

Traits: Prototype (+1 Protection) [-2]

### Mission

The Miranda was designed as a cheaper to build and less capable sister to the Constitution-class. Despite this, its primary mission is still one of exploration.



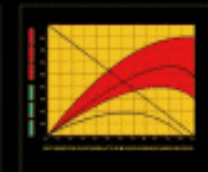
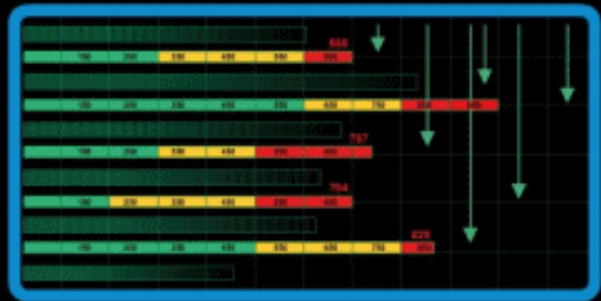
### Background

The Miranda-class while designed in counterpart to the Constitution-class would prove durable beyond the wildest imagination of its creators. Not only would the Miranda outlast its sister class the Constitution, it would still be in use well into the late 24<sup>th</sup> century. The simplicity and ruggedness of its design no doubt accounts for its popularity and utility to Starfleet and the Federation.

### Features

The Miranda features a powerful set of Mk 12 IF photon torpedo launchers, equivalent in power to the Constitution-class's torpedo strength. While its shields and phasers are not quite as powerful as its sister ship, they are still more than capable of accomplishing their intended design goals.

Part of the strength of the Miranda-class is its large volume of relatively unused space. This extra space was utilized to increase the bulkhead thickness throughout the ship, particularly the exterior bulkheads, thus increasing the overall hull strength of the class, with yet some room for future upgrades.



## Ships in Service

| LCARS 03-4900 | <u>Name</u>    | <u>Registry</u> | <u>Notes</u>  |
|---------------|----------------|-----------------|---|
| 00-23892      | U.S.S. Miranda | N.C.C. 1800     | Lead ship of the line (2243).   |
|               | U.S.S. Bombay  | N.C.C. 1806     | Attacked and destroyed by 6 Tholian warships above Ravenar IV, but not before destroying 4 of the attacking Tholian starships (2265). |

05-30902



03-29093

09-38989

07-38948

## Appearances

| <u>Series</u> | <u>Media</u>          |
|---------------|-----------------------|
| 03-29093      | TOS                   |
|               | VAN Novel "Harbinger" |

## Credits

07-38948 TOS Miranda model by Prologic9.